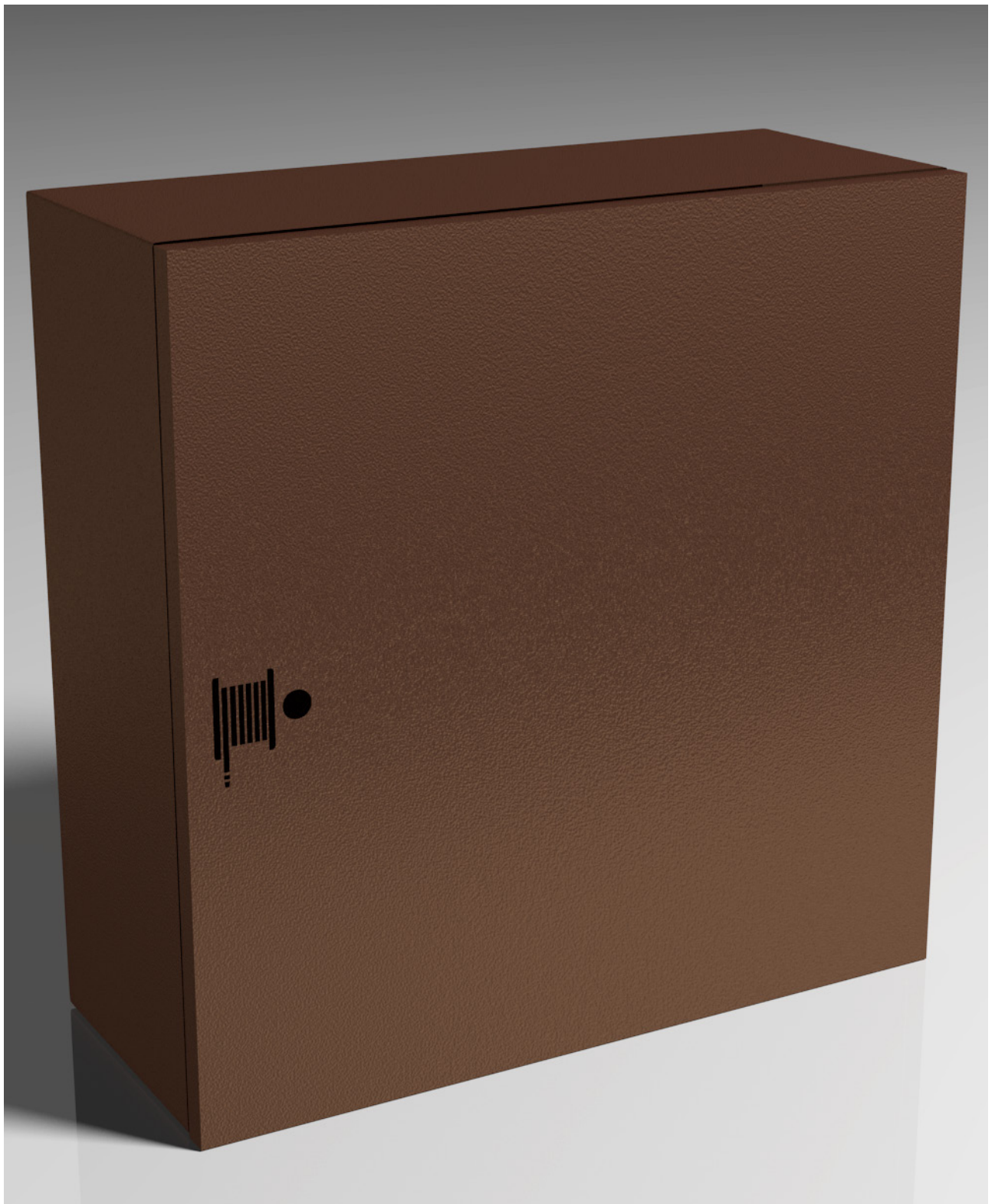


DESIGN Range

The Design Range was created to clients who want an exclusive design of our products. We have a team of experienced professionals ready to meet your challenges.

If you wish a certain model with different dimensions/specifications from the ones in our catalogue, please get in touch with us and request a free budget.



previTOP[®]

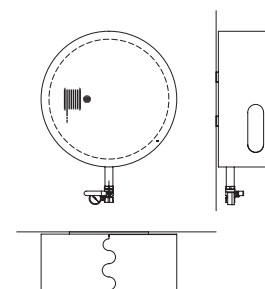
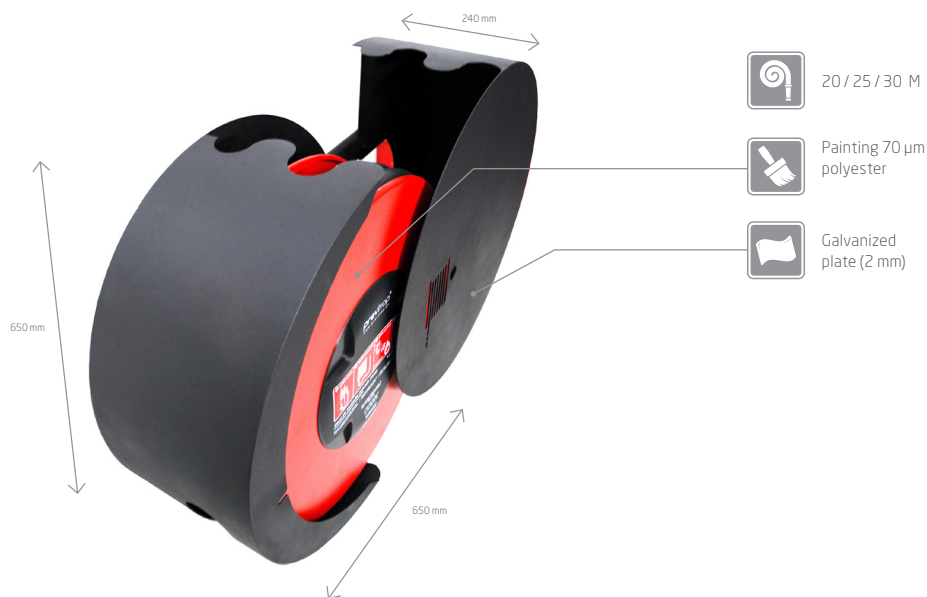
PREVITOP - Comércio e Serviços Unipessoal, Lda
www.previtop.pt



Company Registered in ANPC with n° 500

Fire Ring - Fire Hose Reel and Cabinet

HOSE SYSTEM 25 MM



To download a CAD file please go to www.previtop.pt. Free registration and download.

Reference	Hose Length (m) Ø 25 mm	Dimensions (mm) H x W x D
11-FRD-20	20 e 25	650 x 650 x 260
11-FRD-25		
11-FRD-30	30	650 x 650 x 270

HOSE REEL SPECIFICATIONS

- » Abas galvanized steel plate 1 mm.
- » Tambor galvanized steel plate.
- » Painting 70 µm polyester RAL 3000.
- » Bronze rotary valve.
- » Semi-rigid polyester reinforced PVC hose according to EN 694:2001+A1:2007 (20, 25 or 30m).
- » 3 position nozzle: jet, spray, shut-off 25 mm male inlet.
- » PVC centre with EC marking sticker.

CABINET SPECIFICATIONS

- » Cabinet in galvanized steel plate 2 mm.
- » Painting 70 µm polyester.
- » Sliding door for maintenance operations.
- » Drilled holes for mounting.

INCLUDES

- » Water supply with:
- » Male ball valve with 1" manometer.
- » Galvanized tube.
- » Fixed support.
- » Door sign in accordance with ISO 7010.
- » Installation and maintenance instructions.

NOTES

- » Unidirectional reel.
- » The reel can easily be removed from the cabinet to facilitate the installation.
- » The cabinet can only be wall-mounted NOT recess-mounted.
- » No need to open door when IN USE.
- » Orders must be placed by model + dimensions + direction of the nozzle (left or right).



Options	Cabinet Colour	Acessórios	Cabinet
	RAL Ref.: (custom colour)	Door with vision panel	Stainless Steel A 304
			Stainless Steel A 430
			Corten Steel

CE Hose reel tested, approved and CE marked according to NP EN 671-1:2012 CE n.º 1328-CPR-0149.