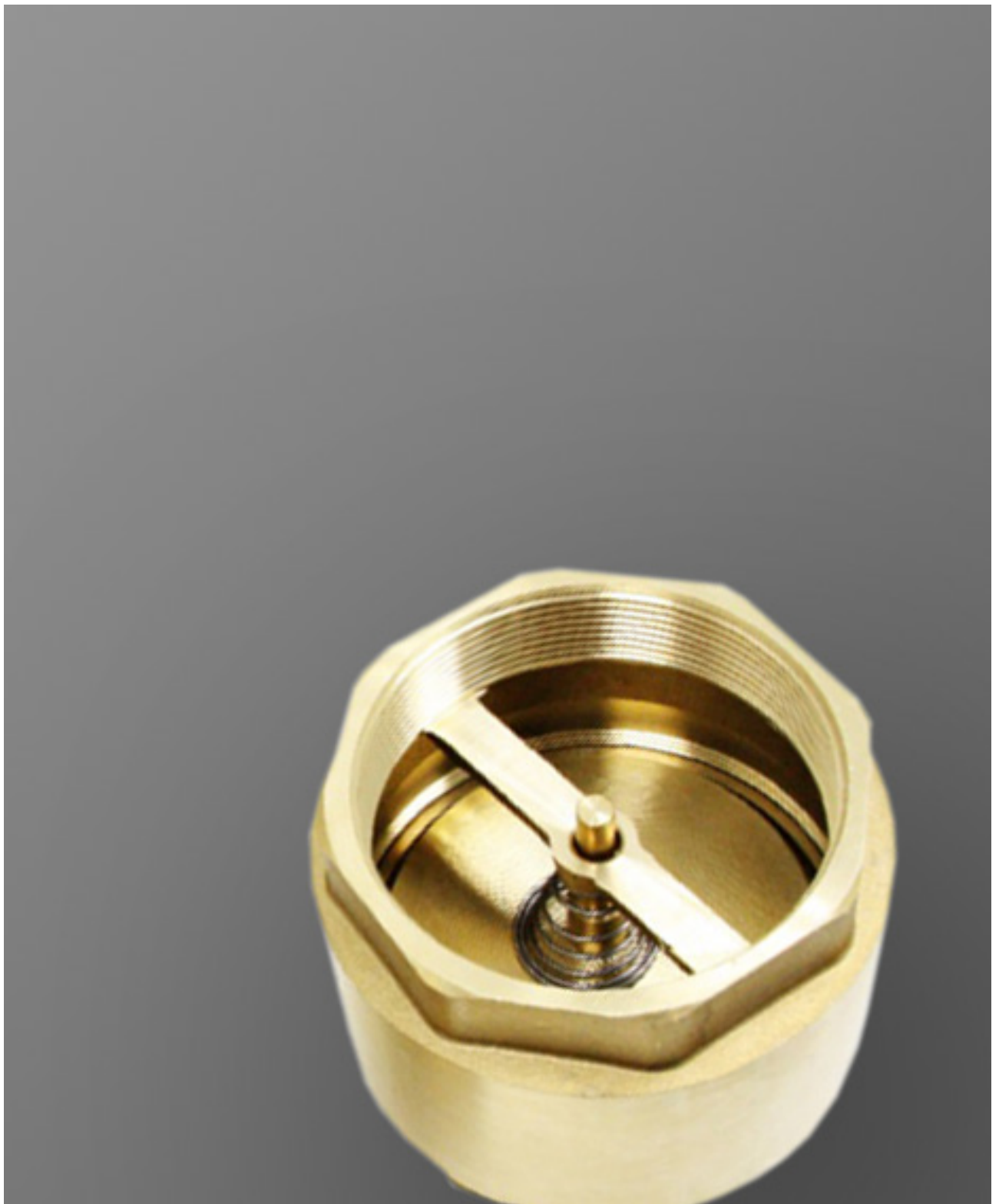


Valves / Storz adapters



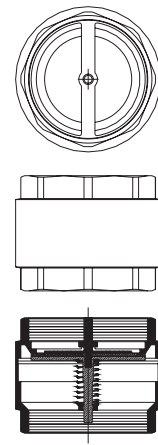
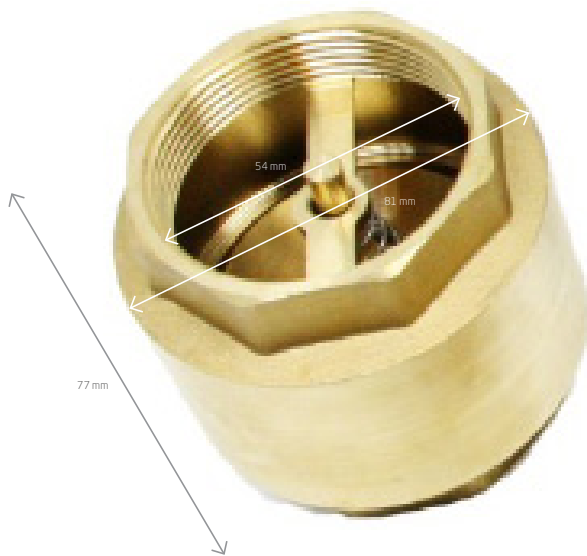
previTOP[®]

PREVITOP - Comércio e Serviços Unipessoal, Lda
www.previtop.pt



Company Registered in ANPC with n° 500

Check Valve



To download a CAD file please go to www.previtop.pt. Free registration and download.

Reference	Size (inch)	Dimensions (mm) H x W x D
16.6-2	2"	77 x 54 x 81
16.6-25	2"½	93 x 68 x 104
16.6-3	3	97 x 78 x 111
16.6-4	4	110 x 100 x 140

VALVE SPECIFICATIONS

- » Brass body.
- » Inlet female thread.
- » Outlet female thread.
- » Brass shaft.
- » Brass membrane support discs.
- » NRB membrane.
- » Spring.

INCLUDES

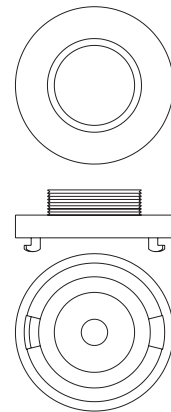
- » PN 16-10-8 spring Check Valve.
- » ISSO 228/1 gas thread.
- » Maximum temperature 80° C.

NOTES

- » It is a one-way valve, allows water out in one way only. Must be installed so that the membrane moves in the same way as the fluid. That way is marked by an arrow on the valve's body.
- » This valve can be installed vertically or horizontally.
- » Orders must be placed by model + dimensions.

STORZ Male

Fire hose adaptor



To download a CAD file please go to www.previtop.pt. Free registration and download.

Reference	Size	Dimensions (mm) H x W x D
19.5.1.1	D 25	1"
19.5.2.1	RB C 52	45
19.5.3.1	C 52	1"½
19.5.4.1	C 52	2"
19.5.5.1	C 52	2"½
19.5.6.1	B 75	1"½
19.5.7.1	B 75	2"
19.5.8.1	B 75	2"½
19.5.9.1	B 75	3"



Main water supply fire hose adaptor.

STORZ SPECIFICATIONS

- » Fire hose adaptor.
- » Aluminium body.
- » Male thread.
- » Rubber seal ring.

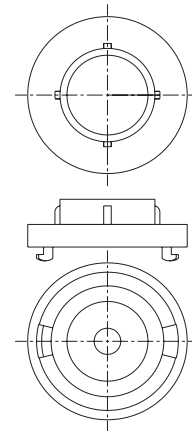
NOTES

- » Orders must be placed by model + dimensions.

Options	Accessories
	Plug: D 25, C 52 e B 75

STORZ Female

Fire hose adaptor



To download a CAD file please go to www.previtop.pt. Free registration and download.

Reference	Size	Dimensions (mm) H x W x D
19.5.1	D 25	1"
19.5.2	RB C 52	45
19.5.3	C 52	1"½
19.5.4	C 52	2"
19.5.5	C 52	2"½
19.5.6	B 75	1"½
19.5.7	B 75	2"
19.5.8	B 75	2"½
19.5.9	B 75	3"



Main water supply fire hose adaptor.

STORZ SPECIFICATIONS

- » Fire hose adaptor.
- » Aluminium body.
- » Female thread.
- » Rubber seal ring.

NOTES

- » Orders must be placed by model + dimensions.

Opções	Acessórios
	Plug: D 25, C 52 e B 75